



**WACKER
NEUSON**
all it takes!

Compact and wheeled excavators

6 to 15 t



Wacker Neuson – all it takes!



Invest in the future.

Set your sights on high-quality construction machines and equipment from Wacker Neuson, which you can rely on for decades - with a consistently high resale value. With over 175 years' history, we are building on a strong foundation and are proud of innovations, which have revolutionized the entire industry. Innovation is in our DNA - benefit from this and set yourself up for the future.

Experience more:
[wackerneuson.com](https://www.wackerneuson.com)



Rely on our partnership on equal footing, very close by.

Our global network of sales and service stations makes Wacker Neuson a partner with whom you can collaborate on-site on equal footing. We are here to listen to you, to understand you, and to solve your problems together with you. Set your sights on a having a strong partner at your side, who will help you to position yourself ahead of the competition.

Bring even more efficiency to your construction site.

Wacker Neuson ensures a maximization in productivity and a minimization in costs - with high-quality products, reliable solutions, and support that guarantees a smooth construction site operation at any time.

Contents.

Tracked excavators

ET58, ET65	4
EZ80, ET90	10
ET145	16

Wheeled excavators

EW65	22
EW100	26



Powerful, comfortable and safe:
the tracked excavators ET58 and ET65.

	ET58	ET65
Shipping weight (kg)	4,817–5,630	5,806–6,682
Digging depth with short and long dipper stick (mm)	3,767–4,017	3,893' - 4,193'
Engine output (kW)	36	42

* with articulated boom

Intentionally selected for every application.

The small, yet fine difference.

Comfort & Maintenance

- Bluetooth radio incl. hands-free system
- USB port
- Lots of storage compartments
- Optional 7-inch multi-functional display with rear-view camera
- High level of cabin comfort
- Innovative front windshield system
- Optimal accessibility to all maintenance points

Safety

- Active Working System (AWS)
- Flexible cylinder rod protection
- 10 tie-downs on upper and under-carriage
- Hose guide protection through tail-swing console
- LED headlights around the machine
- Additional ballast weight available

Efficiency & Performance

- Load Sensing Flow Sharing. Precise control independent of the load
- 3-point kinematics increases dumping height and vertical trench depth
- Compact dimensions
- Guided track rollers outside: optimal lateral stability
- Auto-stop function: automatically switches the diesel engine off when it is not in use (adjustable)
- Pressure release of the auxiliary control circuit for easier coupling of hoses
- Up to 5 additional control circuits ex work
- Diverse chain versions available
- Swiveling dozer blade
- Two dipper stick lengths available



Comfort & Maintenance

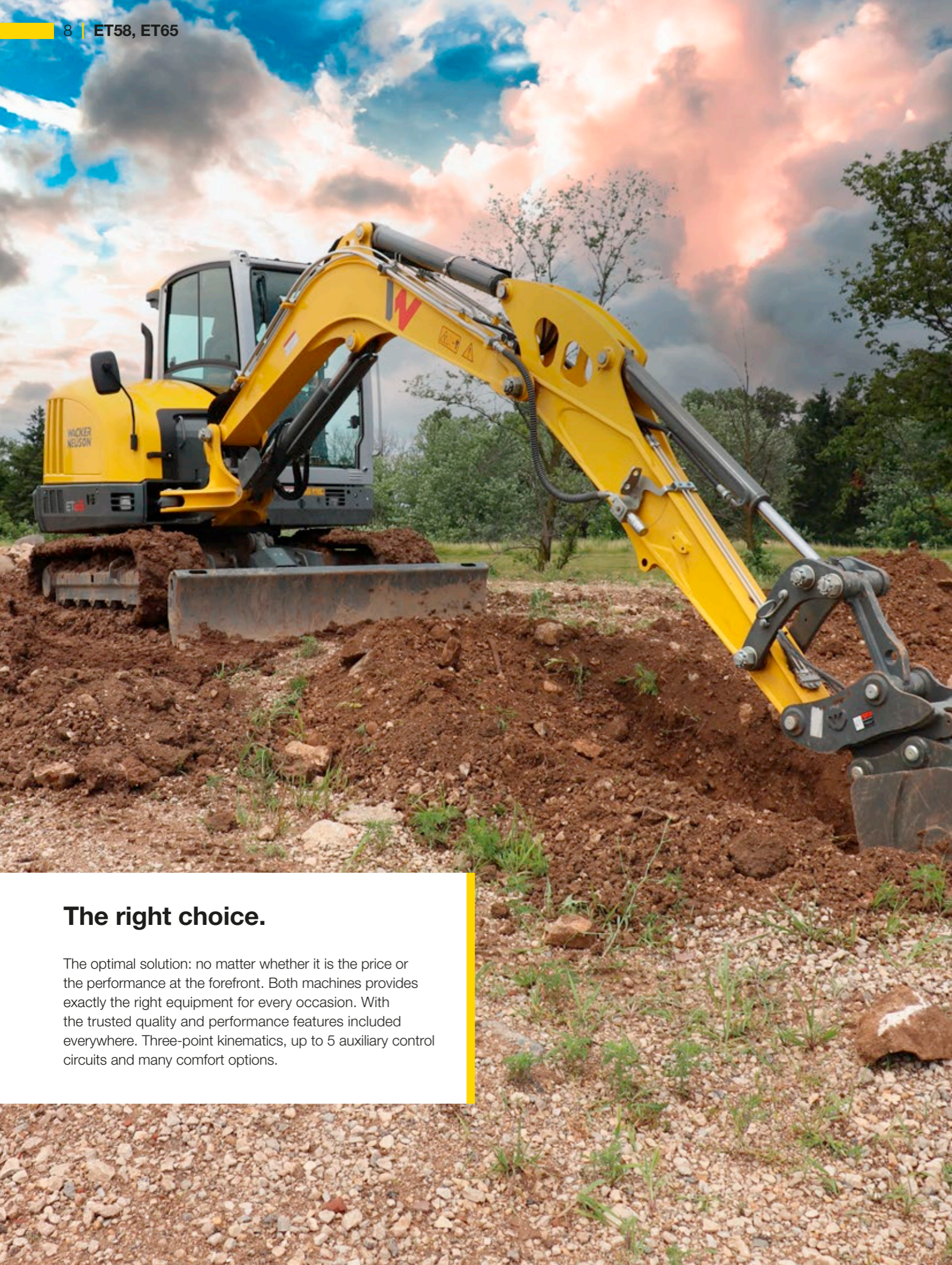
- Bluetooth radio incl.
- Intercommunication station
- USB port
- Optional air-sprung operator's seat with heated seat
- 7-inch multi-functional display with rear-view camera as standard
- Very good visibility conditions of the working area thanks to the laterally positioned boom
- Innovative front windshield system
- Optimal accessibility to all maintenance points

Safety

- 8 tie-downs on upper and under-carriage
- Protective grille for windscreen
- Hose guide protection through tail-swing console
- Auxiliary LED work lights on cab roof and on the chassis
- Additional ballast weight available

Efficiency & Performance

- Single-pump load-sensing hydraulic system
- 3-point kinematics increases dumping height and trench depth
- Compact dimensions
- Optional articulated boom for increased grab-performance and greater range
- Up to 5 additional control circuits ex work
- Diverse chain versions available
- Long dipper stick available



The right choice.

The optimal solution: no matter whether it is the price or the performance at the forefront. Both machines provides exactly the right equipment for every occasion. With the trusted quality and performance features included everywhere. Three-point kinematics, up to 5 auxiliary control circuits and many comfort options.

Tracked excavators ET58 and ET65: Two for every job.



Compact dimensions.

Even with the optional tail weight, the rear projection remains very small when working over the side. The small dimensions of the machine provide great benefit in tight spaces, despite the high level of performance and efficacy.



Stability and Power.

Despite the high performance level, the machines remain reliable and sturdy in any situation. Thanks to the low center of gravity in conjunction with the high-performance hydraulic system, the operator feels stability, power and comfort, while working.



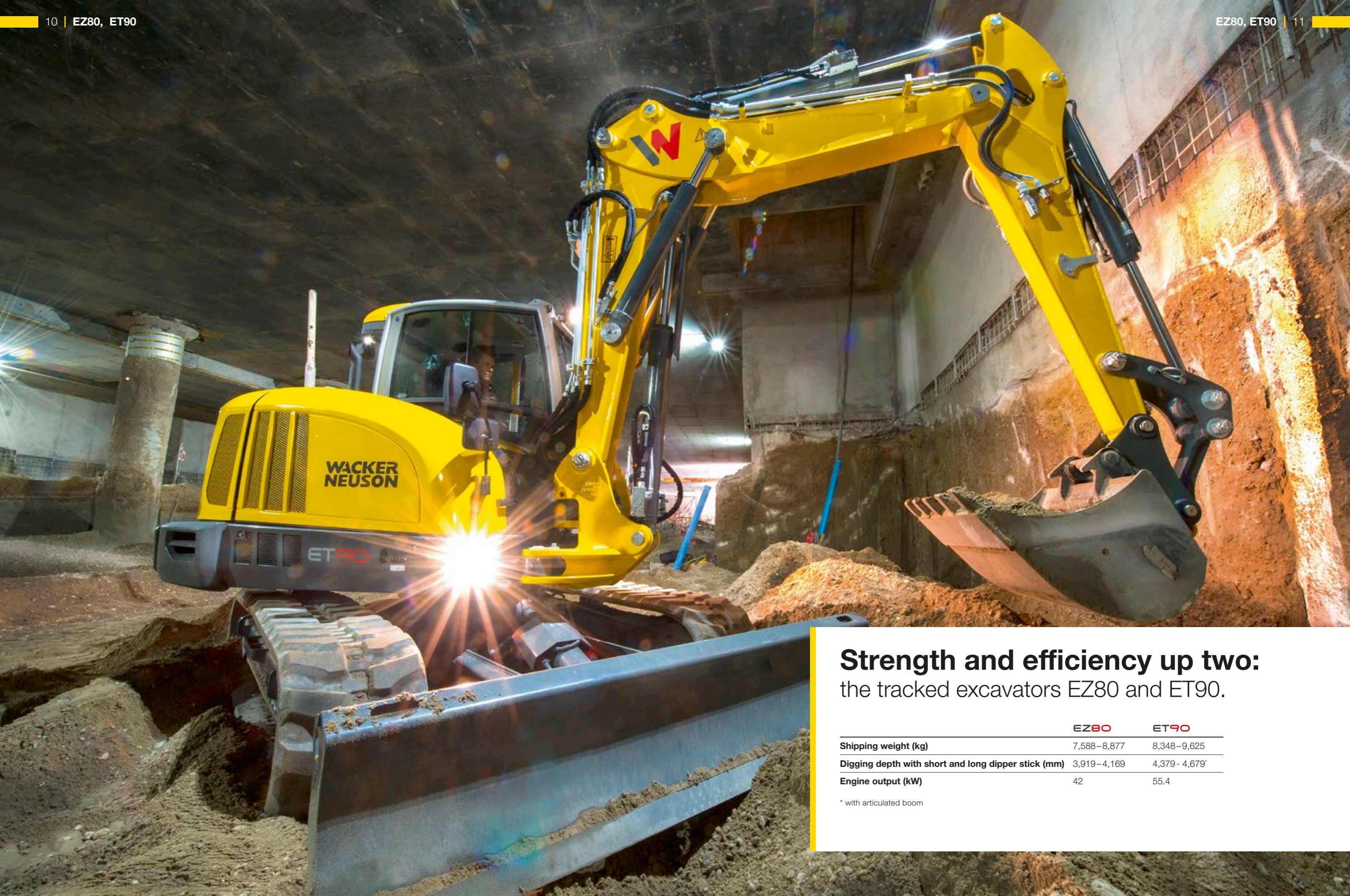
Flexible thanks to the articulated boom (ET65).

With the optional articulated boom, the range of reach and the lift height can be better adapted to any working situation, which enables a more efficient use of the machine. As a result of this, the working area is increased and the application opportunity is extended.



3-point kinematics for greater efficiency.

The unique 3-point kinematics on the bucket linkage extends the rotation angle to 200 degrees. As a result of this, the dipper stick can be rotated in more, loses less material when lifting, and the machine is able to pierce deeper. Perfectly optimized for efficient working.



Strength and efficiency up two: the tracked excavators EZ80 and ET90.

	EZ80	ET90
Shipping weight (kg)	7,588–8,877	8,348–9,625
Digging depth with short and long dipper stick (mm)	3,919–4,169	4,379–4,679*
Engine output (kW)	42	55.4

* with articulated boom

Economical and powerful.

An overview of all the EZ80 and ET90 features.

Quality

- Short hydraulic hoses for less power loss and a long service life
- Large and sturdy aluminum radiator, easy to clean, and with the best cooling performance in its class
- High stability due to a low center of gravity and optional additional rear counterweight

Safety

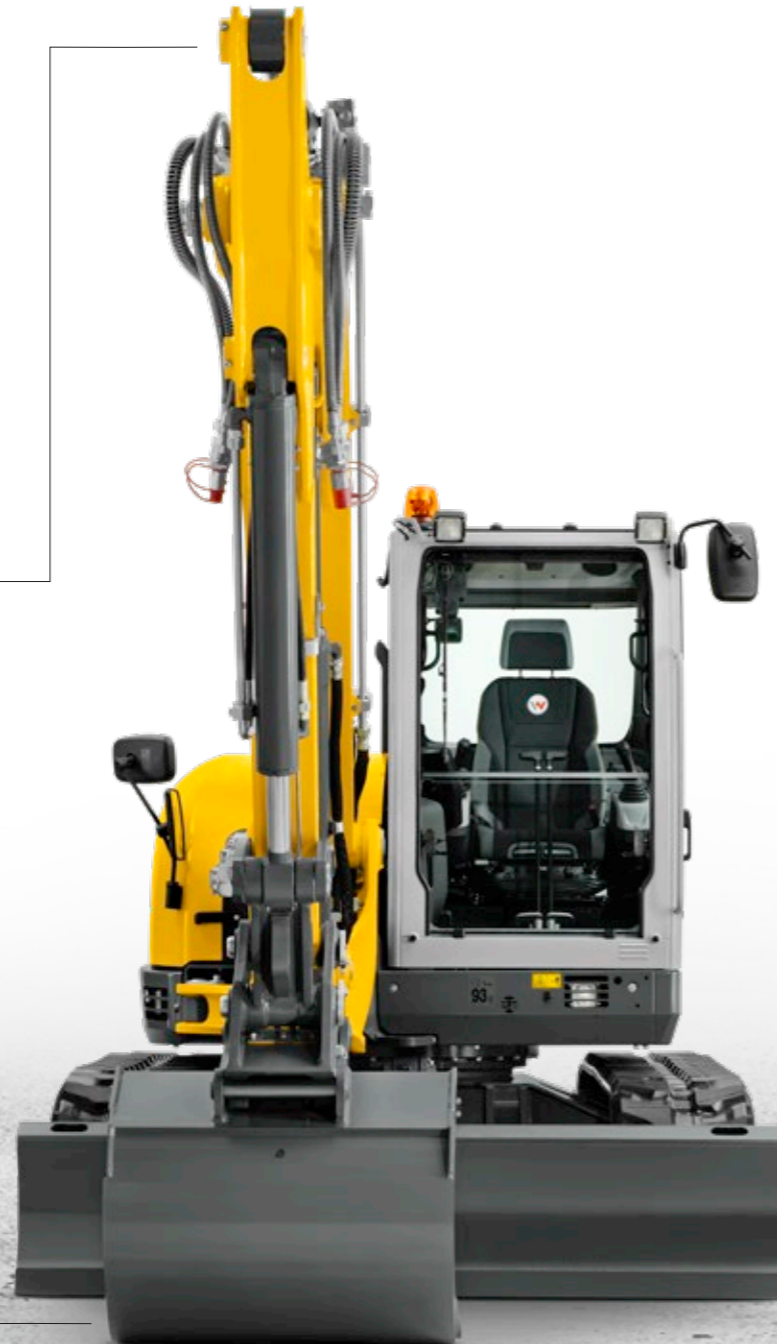
- Up to seven LED headlights around the machine for optimal illumination of the work area
- Eight large tie-downs for safe transport

Efficiency

- Articulated boom for greater digging radius and less repositioning (optional for ET90)
- Powerful drive system for high performance
- Precise control with any load thanks to load-sensing hydraulic system with LUDV (load-independent flow distribution)
- Thermal resistance enables 100% power with an ambient temperature of up to 45 °C
- Quick and easy to access maintenance points

Performance

- Up to four optional auxiliary control circuits ex works
- 3-point kinematics for 200° bucket rotation angle and improved digging data and range
- Two operating modes to choose from: full power (POWER) or fuel-saving (ECO)



More cabin comfort.

The ergonomically optimized operator cabin of the EZ80 and ET90.

Maximum operating comfort as standard with the EZ80 and ET90. In addition, we offer you numerous options to adjust the excavator to your individual requirements.

Performance

- User-friendly jog dial with individually savable settings
- Very low noise levels in the closed cabin
- Two-part windshield that can be completely slid under the cabin roof (standard equipment)

Comfort

- Front sun blind, as standard
- Comfortable and intuitive joystick operation concept: with all important functions on both joysticks
- Powerful air-conditioning system for a pleasant working temperature at all times
- Fully-lined cabin interior with a variety of storage compartments
- Air-cushioned comfort seat including seat heating for increased operator comfort and height adjustment

Safety

- Optimal visibility due to the offset arm position
- Large skylight for the best view even upwards
- Lateral sliding window
- LED headlights for even better illumination
- Rear-view camera with 7" multi-functional display for an ideal view to the rear

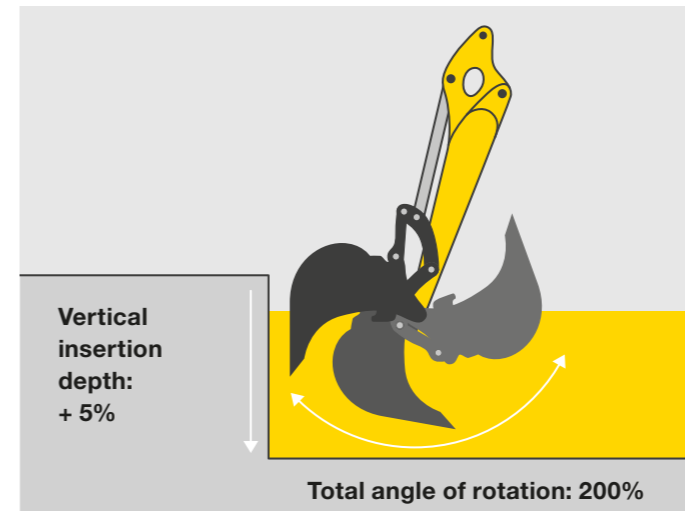




Individuality through variety.

Put together your perfect working unit from a variety of options available, such as:

- Up to 5 additional control circuits, of which 3 are individually adjustable
- Diesel particulate filter
- Air-sprung seat with heated seat
- 7 LED lights
- 4 chain versions
- Custom-made paint finish in automotive quality
- Rear-view camera
- Automatic air conditioning
- Counterweight
- Panolin Bio hydraulic oil
- And much more



Unique 3-point kinematics.

The higher torque or the 3-point kinematics as well as the 200°-expanded angle of rotation make the ET90 the best in its class in terms of digging power.

- Optimal insertion angle rotation of the bucket
- Digs even deeper vertically
- More powerful excavating
- Improved dumping behavior and less material loss
- Up to 20% more break out force



Simple maintenance. Simple repair.

The high productivity of our machines is not just due to the sturdy technology. Most service work can be completed in a short time due to quick and easily accessible maintenance points. Professional maintenance and repairs done by our technicians and original spare parts by Wacker Neuson also extend the service life of your machines.



More productivity and less consumption.

With independent flow distribution (LUDV), 3-point kinematics (ET90), an articulated boom, and long dipper stick, you will be able to get the maximum out of your machine. Due to the efficient hydraulics and the appropriate, mechanical foundation for this, the machine is streamlined to high productivity. This ensures up to 30% more productivity on the construction site, despite possible fuel savings of up to 20%. Achieve more with fewer costs - three machines for the highest degree of efficiency.



Reduced dimensions.

Whether during transportation or in tight spaces: Thanks to its compact design, the EZ80 and the ET90 can easily take you to your next job site. And on the construction site, the machines can maneuver anywhere — even in confined spaces. You can benefit from high efficiency in all applications.

- Very low entry height
- Reduced dimensions due to the intelligent component arrangement
- Higher level of stability due to the low center of gravity
- EZ80 enables working directly against walls thanks to the minimal rear projection



One of our largest compacts:
the tracked excavator ET145.

	ET145
Shipping weight (kg)	14,917–15,701
Digging depth with short and long dipper stick (mm)	5,000–5,500
Engine output (kW)	55.4

Power, maneuverability, and stability.

An overview of all the ET145's features.

Comfort

- Comfortable, fully glazed cab
- Intuitive operating concept enables the simple and comprehensive control of the excavator via jog dial and display
- Large, multi-functional, 7-inch color display shows all functions and camera images
- Air-conditioning installed as standard

Maintenance

- Optimal maintenance access for quick, favorably-priced service
- Sturdy aluminum radiator improves the cooling performance, and is easy to clean
- Cabin is easy to remove to service and repair works

Safety

- Eight large tie-downs for safe transport
- Six LED work lights for optimal illumination of the work area

Versatility

- With AUX I auxiliary hydraulics diverse attachments can be used
- AUX II (3rd control circuit) optionally available
- Three track versions for any application



Environmental-friendliness

- Low noise emissions for easy communication on the construction site
- Lower emissions with the same performance due to the diesel particulate filter (no SCR necessary)

Efficiency

- Swivel console offers more flexibility in excavation work and saves time
- Jog dial for intuitive selection of the right operational settings via the rotary push knob
- Extensive application options as a result of up to five additional control circuits ex works, of which three can be individually set
- Thermal resistance enables 100% output with an ambient temperature of up to 45 °C
- Three operating modes: ECO mode, HI mode, and LOW mode for different, very-demanding tasks

Performance

- Constant power engine for full power at any working speed and low consumption
- Two pre-set operating modes: POWER or fuel-saving ECO mode
- Standard dozer blade for maximum lifting power and stability
- Two travel speeds
- Compact dimensions ensure for high level of safety during transportation and entry, as well as a high level of stability

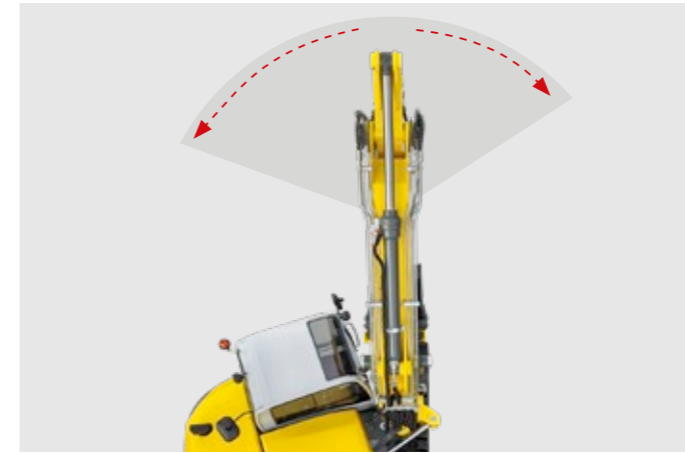
The best of both worlds.

The ET145 combines the productivity of a large excavator model with the advantages of a compact excavator, such as:

- High maneuverability
- Easy transport
- Different track versions
- High digging power, such as with much larger excavators



The champion in the compact class: the tracked excavator ET145.



Swivel console for higher productivity.

The swivel console makes the ET145 into a real highlight in its weight class. This allows you an increased excavation area to the right and left. The swivel console enables works along walls, trenches, or obstacles, and improves the field of vision, for example with excavation works in trench areas.



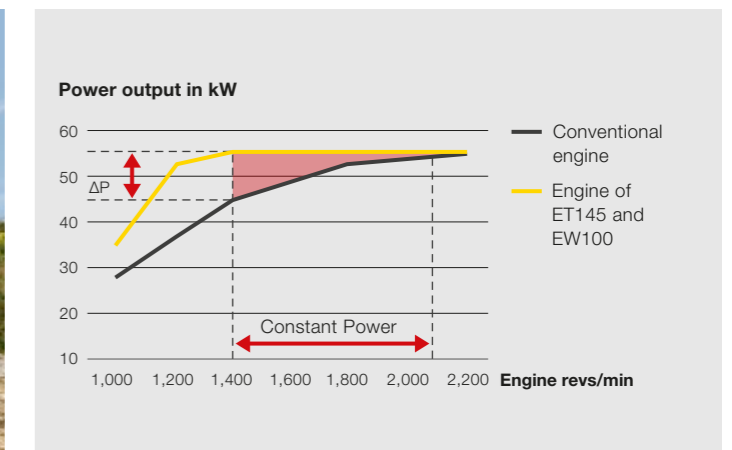
Large, ergonomic comfort cabin.

Sitting position, armrests and joystick can be individually adjusted. The operator sees both the image of the rear-view camera and the programmable discharge volumes for the auxiliary control circuits on the large display, in addition to also seeing machine information. The Jog-Dial can be comfortably operated from the seat position. The cab is equipped with automatic air-conditioning as standard.



Efficient engine.

The 55.4-kW-engine offers excellent digging power with low consumption and fulfills the current emission standards. As a result of the automatic idling speed control and the diesel particulate filter, consumption is reduced and the environment is protected.



Full power even at low rpm.

Even at low speed the ET145's engine displays its full power, which it can then maintain. With this, it clearly has an advantage over the usual engines.



**Power and speed,
perfectly combined:**
of the wheeled excavator EW65.

	EW65
Shipping weight (kg)	6,472–7,720
Digging depth with short and long dipper stick (mm)	3,596–3,895*
Engine output (kW)	42

* with articulated boom

Efficient and quick.

An overview of all the EW65's features.

Efficiency

- Articulated boom for bigger digging radius and less repositioning
- Optimal positioning of hydraulic components
- Powerful drive system for high performance
- Precise control with any load thanks to load-sensing hydraulic system with LUDV (load-independent flow distribution)
- Comprehensive application options due to up to four auxiliary control circuits ex works
- Thermal resistance enables 100% output with an ambient temperature of up to 45 °C

Performance

- 3-point kinematics improves the break out force, insertion depth and dumping height
- Two pre-set operating modes: POWER or fuel-saving ECO mode
- Closed travel circuit, variable from 0 to 30 km/h without gear selection

Environmental-friendliness

- Low noise emissions for easy communication on the construction site
- Environmentally sound and sustainable due to diesel particulate filter (optional)



Comfort

- Low overall height
- Intuitive operating concept enables the simple and comprehensive control of the excavator
- Powerful automatic climate control
- Seat heating
- Innovative windshield system with rain cover function
- Extensively equipped, fully-glazed comfort cab
- Speed regulation system, ideal for municipal work, such as mowing, milling, and mulching

Maintenance

- Optimal maintenance access for quick, favorably-priced service
- Tilttable cabin and removable chassis cover for easy maintenance
- Durable aluminum radiator with high thermal resistance, quick and easy to clean

Versatility

- Numerous attachments thanks to optional auxiliary control circuits
- Construction site change on its own axle
- Up to 30 km/h
- Compact design for easy transportation and more application options

Safety

- LED work lights for optimal illumination of the work area
- 7-inch multifunction display incl. rear-view camera as standard
- Six large tie-downs for quick lashing down and secure transport
- Individual support versions: dozer blade or stabilizer, rear, front or both sides

More power and range thanks to the 3-point kinematics.

The bucket pivot point and thus the torque increases due to an additional bolt in the joint (articulated) rod linkage. The advantage in numbers:

- Up to 20% higher break out force
- 5% greater insertion depth
- 10% greater dumping height



Captivating on any terrain: the wheeled excavator EW65.



Sophisticated working area.

Seat, armrests, and control lever position can be individually adjusted. Operation is both easy and intuitive - identical to the ET65. The proven front windshield system makes communication with the operator easier. To open completely, the windshield can be simply pushed under the cab roof and affixed there.



Increased stability.

A stable, good footing is essential - above all during heavy excavation work or on difficult ground conditions. For support, you can use a dozer blade or support stabilizers - both in front, in the rear, or in any combination.



More leeway thanks to articulated boom.

Optionally available with the EW65, the articulated boom, with a long or short dipper stick, provides you with more maneuverability and therefore greater freedom of action. So not only can you excavate deeper, but the additional joint also makes it possible to pull the bucket all the way to the travel gear or the dozer blade. Ideal when narrow spaces need to be accessed or an obstacle has to be moved out of the way.



Both powerful and sensitive.

Thanks to the load-sensing hydraulics with LUDV (load-independent flow distribution), the power can be adjusted to the situation.



Innovative thinking: of the wheeled excavator EW100.

	EW100
Shipping weight (kg)	10,320 – 11,550
Digging depth with long dipper stick (mm)	4,968
Engine output (kW)	55/100

Developed for the construction site 4.0.

An overview of all the EW100's features.

Efficiency

- Optimal positioning of hydraulic components
- Grade Assist automatic grading function supports the machine on the construction site
- HMI (Human Machine Interface) saves different user settings and construction site information clearly and efficiently
- Attachment interfaces prepared as standard to communicate with other devices in the construction process

Environmental-friendliness

- Auto-stop function turns the machine off if not in use
- ECO automatic in Street mode and ECO mode with intelligent power splitting in construction site operation
- Low-emission stage 5 engine with automatic rpm

Versatility

- Pallet fork operation ex works
- Preparations for 2D and 3D control units ex works
- Preparations for assistance systems and attachment control ex works, without necessary conversions



Safety

- 360° stability - even with high loads the machine remains stable in all directions
- Very good all-round visibility due to low engine hood, deep-glazed windows and doors, as well as transparent load edge
- Active Working Signal (AWS) at rear signals commissioning, attachment change, or machine braking when in Street mode
- Flexible piston rod protection protects against damage without needing to be changed
- Auto-Brake function brakes automatically as soon as the foot is taken off the gas
- Entry, handles, and steps in signal color

Performance

- Highest performance in all areas, including strongly increased auxiliary hydraulics and engine output
- Attachment operation, braked for up to 12 t payload
- 40 km/h maximum speed
- Joystick steering
- 3-point kinematics for 200° dipper stick rotation angle and 20% higher excavation specifications
- 20% more swing power for tilt-rotator applications

Comfort

- Thermal management with auto warm-up and auxiliary heating
- Removable toolbox, incl. power connection and tank filler points at ideal operating height
- Easy fuel-filling from the ground

Highest performance in all areas.

With its strong engine output, the EW100 generates the best data for acceleration and top-speed of up to 40 km/h. The increased auxiliary hydraulic output also enables the use of a number of attachments.



Sets new standards for the future: the wheeled excavator EW100.

Attachment interface.

The EW100 is equipped ex works for retrofitting an attachment interface. This enables an expansion to the machine software with future developments in the field of digitization, without needing to perform retrofits to the machine itself. As a result, communication

with attachments can be performed directly via the machine, and the construction process is optimized.



Preparations for assistance systems and attachment control units.

The machine is prepared ex works for any retrofitting of assistance systems or attachment control units. These can be retrofitted

through software updates with little effort. As a result, it is possible to avoid cost and time-intensive conversions.



Very good all-round visibility.

The design of the machine has been particularly optimized in terms of the field of visibility for the operator. For example, the right tire is very easy to see from the normal seating position. Among other things, this increases the safety for the operator and the construction site surroundings.



Human Machine Interface.

The wheeled excavator EW100 stores individual settings and information for different operators and construction sites. The saved data can be retrieved by selection on the standard 10-inch touchscreen display and work can continue. The operator-based

machine settings store both personal button assignments for individual operating comfort, as well as attachment and flow rate settings per user.



360° stability.

Even at high weights, the machine stands firmly on the ground. As a result of the 360° stability, it is possible to move even large loads without the machine becoming unstable. Through

the optimal balance, the lateral stability of the machine is also increased by 25%.





Compact and powerful.

The EW100 combines the dimensions of a compact machine with the power of a 14-ton excavator. 20% more swing power for tilt rotator applications and the proven 3-point kinematics with swivel console provide even more freedom of movement in

application 200° bucket angle of rotation, 20% better excavation data, and as a result 360° stability make the EW100 one of the most powerful construction site aids.



Many attachments, minimal effort.

Simple select, attach, and get started. Attachments that are already saved can, in part, be automatically coupled and the operator need not leave the machine to do this. The machine learns to recognize intelligent attachments and to communicate

with them. Manual attachments can be stored once and then selected and recognized in future by just pressing on the display.

“Next level” of the wheeled excavator:
be best-equipped now for the future.

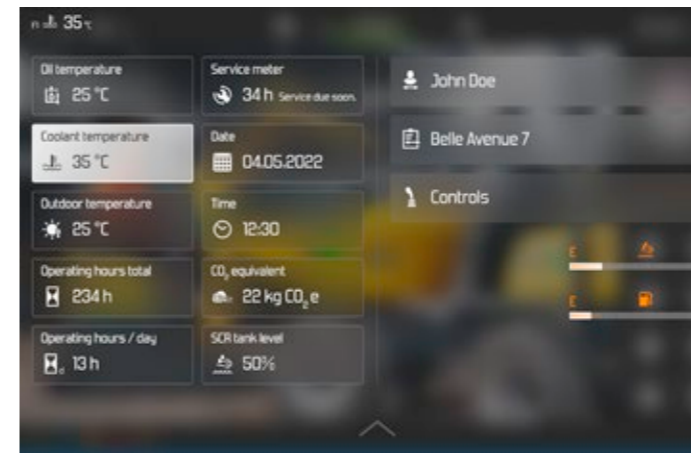


Attachment operation up to 12 tons.

Thanks to its powerful output, the EW100 is prepared for attachment operation (braked up to 12 tons). With this, there is no need for additional transportation vehicles or smaller machines.

Select and get started.

Attachments that have already been configured and manually saved can be easily and intuitively changed at any time. In doing so, the operator is guided by the specific saving and setting options.



Customization made easy.

If desired, a specific user, the current construction site, and specific joysticks can be configured to guarantee the ideal work cycle with the guarantee of comfort. Thus the operator has all the important details immediately available to them. Different construction sites can be retrieved after entry, and all information on them can be retrieved.



Low in servicing and maintenance.

The increased maintenance intervals and an integrated self-check system greatly minimize the machine downtimes. If an error should arise, the performed troubleshooting saves high costs and via remote diagnostics can also provide information about the current machine status.

Attachments.

Quick hitch systems.



EasyLock+.

With the hydraulic quickhitch system EasyLock+, you can change the attachment from the operator's seat in just a few seconds by pressing the button. This makes you even more flexible and productive.

In addition to the normal bucket operation, the system also enables the use of a face shovel. Thus, the new EasyLock+ is even safer and meets all the requirements of current standards.



Powertilt.

The Powertilt swivel unit is available as an option and can be combined with both EasyLock+ and the Lehmatic quick hitch system. This allows the attachment to be tilted by up to 90° on each side – ideal for leveling, mulching, or grading work.

Lehmatic.

With the Lehmatic quick coupler system, you have the option to select between the mechanical and hydraulic system. The system is durable and functionally reliable, even for hard applications. The hydraulic system is equipped with "Double-Lock" protection. The Lehmatic quickhitch system is available both with and without the Powertilt.

The right attachment for every application.

Bucket types.

Wacker Neuson offers you different types of bucket types for excavating, separating, transporting, and shaking off soils or other bulk materials. These are available for both EasyLock+ and Lehmatic quick hitch systems.

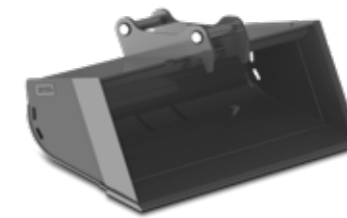
To be perfectly equipped for all situations from the outset, there are a number of pre-defined bucket sets available ex works. For more information, please contact your sales partner.



Bucket with blade



Bucket with teeth



Ditch or trench cleaning bucket



Swivel bucket incl. hydraulic hoses and couplings

Innovative windshield system.

The two-part front window allows for optimal ventilation in the cabin in any weather. In addition, it makes it easier to

communicate with the operator. A separate removal and storage of the window is a thing of the past.



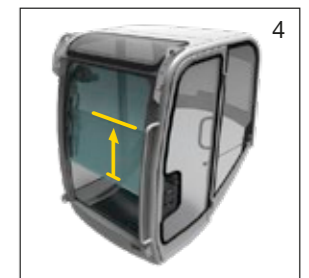
Closed front window - two glass windows keep water and wind out.



The upper front window can be pushed under the cabin roof. The lower pane serves as splash protection.



The lower window slides behind the upper window. Ideal for communication with colleague.



If necessary, both panes are pushed below the cabin roof where they are stored safely.

Configuration options.

Cab

	ET58	ET65	EZ80	ET90	ET145	EW65	EW100
Side mirror (rear-view mirror)	○	●	●	●	●	●	●
FOPS protective grating level 1	●	●	●	●	○	●	●
FOPS protective grating level 2*	-	○	○	○	○	○	○
1-door cabin (sliding window)	○	●	●	●	●	●	●
Automatic air conditioning	○	○	○	●	●	○	●
Air-cushioned operator's seat	●	○	○	○	○	○	○
Air-cushioned, heated seat	-	○	○	○	○	○	○
Radio configuration	●	●	●	●	-	●	●
Radio incl. Bluetooth intercommunication station	○	○	○	○	●	○	●
Sun shade	-	-	-	-	-	●	●
Auxiliary heating	-	-	-	-	-	-	○
10-inch touchscreen display	-	-	-	-	-	-	●

Hydraulics

	ET58	ET65	EZ80	ET90	ET145	EW65	EW100
Automatic pressure release H1 & H2 (AUX I + AUX II)	○	-	-	-	-	-	●
Electric pressure setting H1 & H2 (AUX I + AUX II)	○	-	-	-	-	-	○
Flat-faced coupler	○	○	○	○	○	○	○
Leak oil line	○	-	-	-	-	-	○
Bio oil Shell Panolin	○	○	○	○	○	○	○
Auxiliary hydraulics proportional control (AUX I)	●	●	●	●	●	●	●
Overload valve for auxiliary hydraulics	○	○	○	○	●	○	○
Flow control valve 3rd control circuit	○	○	○	○	○	○	○
Control circuit for grapple (AUX V)	○	○	○	○	○	○	●
Safe load indicator Basic	●	●	●	●	-	-	-
Overload warning device Advanced	○	○	○	○	●	●	●
Preparation for Powertilt (H3 / AUX III)	○	○	○	○	○	○	○
Preparation for quick coupler system (Q / AUX IV)	○	○	○	○	○	○	○
Auxiliary hydraulic circuit (H1 / AUX I)	●	○	○	○	●	○	●
Auxiliary hydraulic circuit (H2 / AUX II)	○	○	○	○	○	○	●
3rd control circuit (AUX II)	○	○	○	○	●	○	●

Paint

	ET58	ET65	EZ80	ET90	ET145	EW65	EW100
Special paint 1 RAL	○	○	○	○	○	○	○
Special paint 1 no RAL	○	○	○	○	○	○	○
Special paint cab/canopy RAL	○	○	○	○	○	○	○

Security

	ET58	ET65	EZ80	ET90	ET145	EW65	EW100
Security 24 C (2,000 h)	○	○	○	○	○	○	○
Security 36 C (3,000 h)	○	○	○	○	○	○	○
Security 48 C (4,000 h)	○	○	○	○	○	○	○
Security 60 C (5,000 h)	○	○	○	○	○	○	○

Other

	ET58	ET65	EZ80	ET90	ET145	EW65	EW100
All-wheel steering	-	-	-	-	-	-	○
Trailer operation complete	-	-	-	-	-	-	○
Trailer operation preparation	-	-	-	-	-	-	○
Attachment interface	-	-	-	-	-	-	○
Work light mounted to boom	●	●	●	●	●	●	●
Front and rear work lights	○	○	○	○	●	○	●
Auto-break function	-	-	-	-	-	-	●
Auto-stop function	○	-	-	-	-	-	○
Auto-warm-up function	-	-	-	-	-	-	○

* only with additional protective grate ● Standard ○ Option - not available

Other

	ET58	ET65	EZ80	ET90	ET145	EW65	EW100
AWS (Active Working Signal)	●	-	-	-	-	-	●
Counterweight	○	○	○	○	-	-	-
Balloon tires	-	-	-	-	-	●	○
Diesel filling pump	○	○	○	○	●	○	○
Automatic RPM speed control	●	●	●	●	●	●	●
EquipCare 36 months (including app & manager)	○	○	○	○	○	○	○
Drive signal	○	○	○	○	-	○	○
Cruise control system	-	-	-	-	-	○	○
Rubber track*	●	●	●	●	○	-	-
Hybrid track*	-	○	○	○	○	-	-
Joystick steering	-	-	-	-	-	-	○
Long dipper stick	○	○	○	○	○	○	●
Optional joystick with option to configure	-	-	-	-	-	-	○
Pallet fork operation complete	-	-	-	-	-	-	○
Pallet fork operation preparation	-	-	-	-	-	-	●
Front or rear dozer blade	-	-	-	-	-	○	○
Front or rear stabilizer support	-	-	-	-	-	○	○
Rear-view camera	○	○	○	○	●	●	●
Reverse alarm	-	-	-	-	-	-	○
LED rotating beacon	○	○	○	○	○	○	○
Green LED rotating beacon	○	-	-	-	-	-	○
Bucket cylinder hose breakage protection	-	-	-	-	-	-	○
Dirt trap	-	-	-	-	-	-	○
Lifting arm vibration dampening	-	-	-	-	-	-	○
Steel track*	○	○	○	○	●	-	-
Road traffic regulation accessories	-	-	-	-	-	○	○
ISO - SAE switch-over	○	○	○	○	○	○	○
Steering logic switch-over	-	-	-	-	-	-	○
Articulated boom	-	○	-	○	-	○	●
Assistance systems' operation	-	-	-	-	-	-	●
KAT Drive interlock	○	○	○	○	○	○	○
Tool box	-	-	-	-	-	-	○
Central lubrication system	-	-	-	-	-	-	○
Dual tires	-	-	-	-	-	○	●
Twin tires with intermediate ring	-	-	-	-	-	-	○
30 km/h	-	-	-	-	-	○	○
40 km/h	-	-	-	-	-	-	○

Assembled attachments

	ET58	ET65	EZ80	ET90	ET145	EW65	EW100
Easy Lock	○	○	○	○	-	○	○
Easy Lock + Powertilt	○	○	○	○	-	○	○
Easy Lock + Powertilt + Load hook	○	○	○	○	-	○	○
Hyd. Lehnhoff quick hitch system + Load hook	○	○	○	-	○	○	○
Hyd. Lehnhoff quick hitch system + Powertilt + Load hook	○	○	○	-	○	○	○
Mechanical quick hitch system	-	○	○	○	○	○	○
OilQuick + Load hook	-	-	-	-	○	-	○
OilQuick + Powertilt + Load hook	-	-	-	-	○	-	○

* different widths possible depending on the model ● Standard ○ Option - not available

Dimensions.

	Unit	ET58	ET65	EZ80	ET90	ET145	EW65	EW100
A Height	mm	2,550	2,478	2,562	2,562	2,790/ 2,825 ⁽⁴⁾	2,775	2,963
B Width of travel gear, retracted (track / tires)	mm	1,960	1,950	2,250	2,250	2,490	1,832 2,088 ⁽¹⁾	2,450
C Transport length (short dipper stick)	mm	5,455	6,128/ 6,100 ⁽²⁾	6,939	7,117/ 6,468 ⁽³⁾	7,720	6,114/ 6,220 ⁽³⁾	–
C Transport length (long dipper stick)	mm	5,446	6,135/ 6,210 ⁽²⁾	6,944	7,139/ 6,690 ⁽³⁾	7,790	6,137/ 6,349 ⁽³⁾	6707
D Max. digging depth (short dipper stick)	mm	3,767	3,757/ 3,879 ⁽³⁾	3,919	4,325/ 4,379 ⁽³⁾	5,000	3,531/ 3,596 ⁽³⁾	–
D Max. digging depth (long dipper stick)	mm	4,017	4,003/ 4,184 ⁽²⁾	4,169	4,625/ 4,679 ⁽³⁾	5,500	3,831/ 3,895 ⁽³⁾	4,212
E Max. vertical insertion depth (short dipper stick)	mm	2,708	2,431/ 2,811 ⁽²⁾	1,915	3,192/ 3,198 ⁽³⁾	3,100	2,088/ 2,465 ⁽³⁾	–
E Max. vertical insertion depth (long dipper stick)	mm	2,945	2,704/ 3,095 ⁽²⁾	2,124	3,474/ 3,456 ⁽³⁾	3,600	2,361/ 2,737 ⁽³⁾	3,039
F Max. insertion height (short dipper stick)	mm	5,749	5,759/ 6,539 ⁽²⁾	6,620	7,322/ 7,931 ⁽³⁾	8,300 ⁽⁵⁾	6,068/ 6,834 ⁽³⁾	–
F Max. insertion height (long dipper stick)	mm	5,910	5,940/ 6,774 ⁽²⁾	6,782	7,529/ 8,196 ⁽³⁾	8,600 ⁽⁵⁾	6,250/ 7,067 ⁽³⁾	8,069
G Max. dumping height (short dipper stick)	mm	3,834	3,993/ 4,684 ⁽²⁾	4,587	5,066/ 5,674 ⁽³⁾	5,700/ 5,659 ⁽⁴⁾	4,207/ 4,961 ⁽³⁾	–
G Max. dumping height (long dipper stick)	mm	3,995	4,714/ 4,916 ⁽²⁾	4,749	5,272/ 5,940 ⁽³⁾	6,000	4,389/ 5,195 ⁽³⁾	6,260
H Max. digging radius (short dipper stick)	mm	6,039	6,224/ 6,601 ⁽²⁾	6,955	7,331/ 7,596 ⁽³⁾	8,300	6,220/ 6,590 ⁽³⁾	–
H Max. digging radius (long dipper stick)	mm	6,277	6,508/ 6,890 ⁽²⁾	7,190	7,620/ 7,889 ⁽³⁾	8,800	6,504/ 6,877 ⁽³⁾	7,713
I Max. reach at ground level (short dipper stick)	mm	5,920	6,100/ 6,487 ⁽²⁾	6,795	7,179/ 7,463 ⁽³⁾	8,100	6,024/ 6,406 ⁽³⁾	–
I Max. reach at ground level (long dipper stick)	mm	6,164	6,391/ 6,779 ⁽²⁾	7,036	7,474/ 7,751 ⁽³⁾	8,600	6,318/ 6,706 ⁽³⁾	7,503
J Min. tail swing radius	mm	1,312	1,363	1,228	1,583	2,015	1,459	1,690
K Max. boom offset to center of bucket (right/left)	mm	551/ 583	766/ 492	705/ 683	705/ 683	850/ 640	766/ 492	940 / 625
L Max. stacking height of the dozer blade above subgrade (short/long)	mm	414	403	474	479	492/ 532 ⁽⁴⁾	395	390
M Max. scraping depth of dozer blade under subgrade (short/long)	mm	439	427	523	518	531/ 493 ⁽⁴⁾	301	136
N Total track length	mm	2,509	2,516	2,826	2,826	3,605	2,887	3,193
O Max. swing angle of arm system to the right	°	55	63	63	63	57	63	55
P Max. swing angle of arm system to the left	°	70	67	67	67	70	67	70
Q Track/tire width	mm	400	400	450	450	500	300/ 457 ⁽¹⁾	490 / 514 / 577
R Boom swing radius, center	mm	2,409	2,453 3,159 ⁽²⁾	2,869	2,503 2,840 ⁽³⁾	2,814	2,465 2,605 ⁽³⁾	3,141

(1) Dual tires (2) Balloon tires (3) with articulated boom (4) with hybrid track (5) with steel track

Technical data.

General

	Unit	ET58	ET65	EZ80	ET90	ET145	EW65	EW100
Shipping weight	kg	4,817–5,630	5,806–6,682	7,588–8,877	8,348–9,625	14,917–15,701	6,472–7,720	10,320–11,550
Operating weight	kg	5,052–5,890	6,078–7,358	7,918–9,544	8,710–10,506	15,551–17,275	6,755–8,647	10,625–11,855
Max. ripping force*	kN according to ISO 6015	28	30.8	43.7	46	69	30.8	44
Max. break out force	kN according to ISO 6015	46**	50.7	68	73.8	91	50.7	73.3

Drive

	Unit	ET58	ET65	EZ80	ET90	ET145	EW65	EW100
Manufacturer		PERKINS	PERKINS	PERKINS	PERKINS	PERKINS	PERKINS	PERKINS
Model		403J-E17T	404J-E22T	404D-22T/404J-E22T	904J-E28T	904J-E36TA	404J-E22T	904J-E28T/904J-E36TA
Engine output	according to ISO kW/hp	33.4/45.4	42/57.1	42/57.1	55.4/75.3	55.4/75.3	42/57.1	55/75 100/136
Fuel tank volume	l	80	85	85	85	205	85	190
Emission standard	–	Stage V						

Hydraulics

	Unit	ET58	ET65	EZ80	ET90	ET145	EW65	EW100
Hydraulic system / pumps	–	LUDV with variable displacement pump				Negative control with dual displacement pump and 2 gear pumps	LUDV with variable displacement pump, separate travel pump	
Max. flow rate	l/min	132.2	144	160	175	2x118+20+36	158.4+99	181.5 + 32.9 170 + 171
Operating pressure for work and drive hydraulics	bar	265	240	300	300	340	240/420	300
Operating pressure for swing gear	bar	209	215	240	240	320	215	280
Auxiliary hydraulics, max. discharge volume	l/min	75	107	113	113	121	107	180

Travel gear

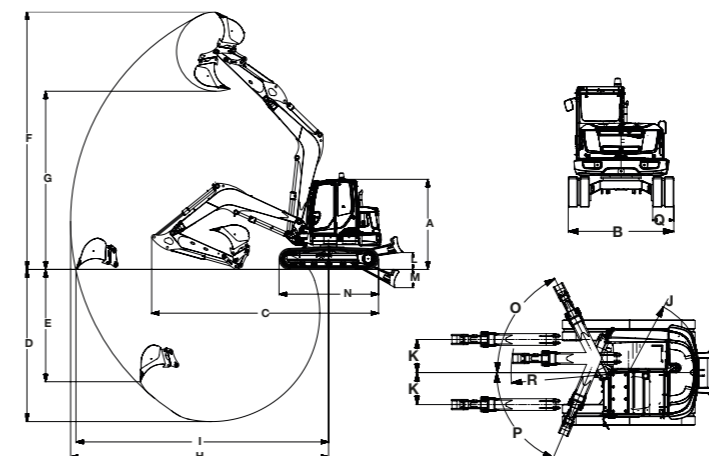
	Unit	ET58	ET65	EZ80	ET90	ET145	EW65	EW100
Ground clearance	mm	330	284	357	370	480	237	293 / 301 / 310
Max. travel speed	km/h	4.4	5.2	4.4	5	5	up to 30	40
Ground pressure of basic machine	kg/cm ²	0.28–0.34	0.35	0.36	0.40	0.50	–	–

Noise emissions

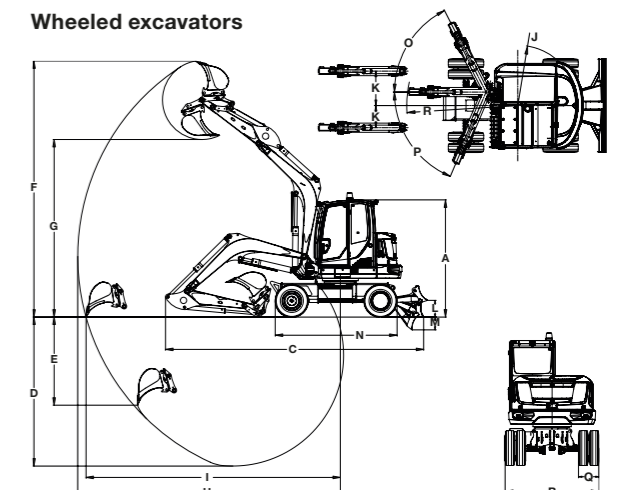
	Unit	ET58	ET65	EZ80	ET90	ET145	EW65	EW100
Sound power level (LWA)	dBA acc. to 2000/14/EC	97	97	97	99	99	97	99
Emission sound pressure level (LPA)	dBA acc. to ISO 6394	77	77	79	79	75	77	tba

All information relates to the base machine. Subject to changes.

Tracked excavators



Wheeled excavators



Lift capacity tables.

ET145

A	MAX																									
	6.0 m				5.0 m				4.0 m				3.0 m													
	C		D		C		D		C		D		C		D											
B	Blade up		Blade down		Blade up		Blade down		Blade up		Blade down		Blade up		Blade down											
	from	up to	from	up to	from	up to	from	up to	from	up to	from	up to	from	up to	from	up to										
6.0 m	2,368	2,878	2,879	3,271*	2,544	3,094	-	-	2,569	2,946	2,569	3,234*	2,569	3,167*	-	-	-	-	-	-	-	-	-	-	-	
4.0 m	1,677	1,909	2,966	3,301*	1,807	2,055	2,145	2,200	2,874	3,263*	2,307	2,365	2,862	2,893	2,866	3,349*	2,866	3,113*	3,572	3,572*	3,572	3,572*	-	-	-	-
2.0 m	1,462	1,664	3,485	3,152*	1,580	1,775	2,015	2,050	3,545	3,828*	2,175	2,213	2,605	2,671	4,142	4,543*	2,818	2,887	3,528	3,660	5,370	6,064*	3,836	3,977	-	-
0 m	1,471	1,668	3,413	3,758*	1,594	1,805	1,884	1,927	4,182	4,303*	2,043	2,087	2,408	2,448	5,234	5,400*	2,617	2,659	3,247	3,293	7,159	7,333*	3,550	3,598	4,891	5,002
-2.0 m	1,772	2,093	3,752	4,094*	1,921	2,269	1,858	1,883	4,029	4,029*	2,016	2,044	2,355	2,443	4,992	5,217*	2,563	2,654	3,201	3,308	6,629	6,958*	3,502	3,614	4,927	5,096
-4.0 m	3,520	3,562	4,038	4,038*	3,837	3,884	-	-	-	-	-	-	-	-	-	-	-	-	-	-	-	-	-	-	5,240	5,302

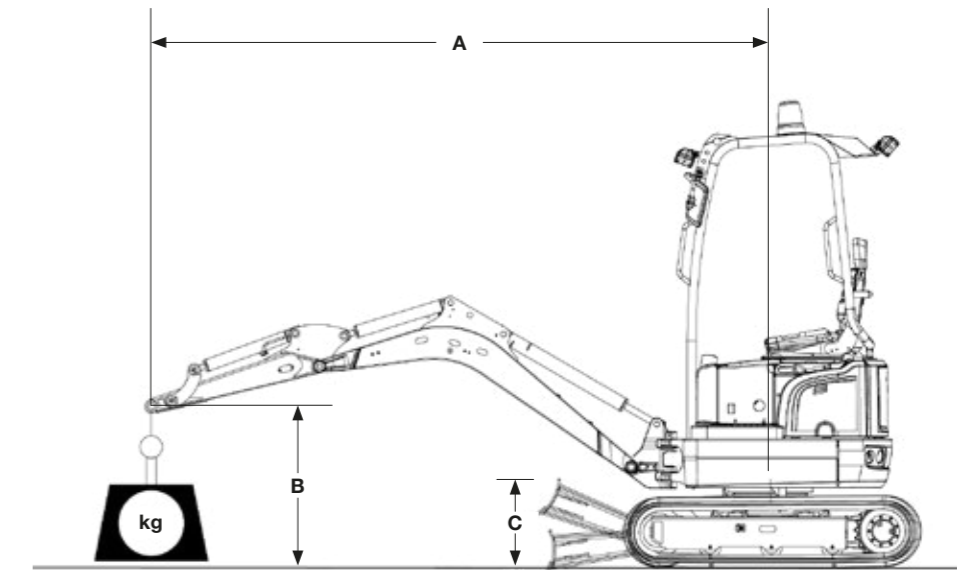
All table values are given in kg in a horizontal position on a solid surface and without bucket.

EW65

A	MAX																									
	5.0 m				4.0 m				3.0 m				2.0 m													
	C		D		C		D		C		D		C		D											
B	Blade up		Blade down		Blade up		Blade down		Blade up		Blade down		Blade up		Blade down											
	from	up to	from	up to	from	up to	from	up to	from	up to	from	up to	from	up to	from	up to										
4.0 m	1,019	1,227*	1,083	1,227*	726	1,207	1,079	1,079*	1,079	1,079*	806	883	1,125	1,240*	1,125	1,240*	-	-	-	-	-	-	-	-	-	-
3.0 m	869	1,229*	1,047	1,229*	614	1,002	1,105	1,226*	1,105	1,226*	782	1,009	1,255	1,360*	1,255	1,360*	1,132	1,252*	1,523	1,721*	1,523*	1,721*	-	-	-	-
2.0 m	798	1,255*	1,031	1,255*	559	914	1,186	1,281*	1,186	1,281*	746	984	1,466	1,554*	1,466	1,554*	1,048	1,365*	2,010	2,078*	2,010*	2,078*	1,575	2,010*	2,823	3,234*
1.0 m	778	1,286	1,020	1,295*	541	893	1,259	1,362*	1,259	1,362*	704	959	1,650	1,728*	1,650	1,728*	970	1,305	2,207	2,576*	2,496*	2,576*	1,420	2,576*	4,770	4,961*
0 m	806	1,343*	1,006	1,343*	557	935	1,230	1,361*	1,259	1,361*	674	944	1,606	1,841*	1,708	1,841*	917	1,268	2,138	2,743*	2,488*	2,743*	1,360	2,743*	4,088	5,110*
-1.0 m	900	1,387*	971	1,387*	621	1,074	974	1,128*	1,128	1,128*	667	839	1,586	1,731*	1,587	1,778*	899	1,262	2,126	2,550*	2,148*	2,632*	1,350	2,632*	3,040	4,600*
-2.0 m	869	1,375*	869	1,375*	779	1,375*	-	-	-	-	-	-	1,003	1,207*	1,003	1,374*	922	1,269	1,506	1,904*	1,506*	2,163*	1,385	2,163*	2,509	3,576*

EW100

A	MAX		6.0 m		5.0 m		4.0 m		3.0 m	
	C		D		C		D		C	
	Blade up		Blade up		Blade up		Blade up		Blade up	
7.0 m	2,957*	2,957*	-	-	-	-	-	-	2,990*	2,990*
4.0 m	1,169	1,261	1,304	1,402	1,891	1,912*	2,167*	2,167*	-	-
2.0 m	993	1,076	1,281	1,384	1,651	1,778	2,272	2,446	3,678	3,956
0 m	1,021	1,108	1,201	1,302	1,586	1,716	2,150	2,325	3,531	3,824
-3.0 m	1,390*	1,390*	-	-	-	-	-	-	2,471*	2,471*



Meaning of abbreviations in tables

- A: Outreach from middle of rotating assembly
- B: Height of load hook
- MAX: Permissible load with extended dipper stick
- C: Dozer blade up or down, in travel direction – except EW100: against travel direction
- D: Dozer blade up, revolving superstructure 90° to travel direction

* Lift capacity limited by hydraulics

Actual lift capacity depends on the outfitting of the machine. You can find these in the respective operator's manual.

The Wacker Neuson product range includes over 300 different product series with different versions. The product data may vary accordingly with the selection of different options. Not all Wacker Neuson products listed or shown here are however available or allowed in all countries. The Wacker Neuson products shown are examples and as such are subject to changes. We are happy to make you a specific offer upon request!

Reproduction only with the written approval of Wacker Neuson.

Wacker Neuson – all it takes.



Concrete technology



Vibratory rammers



Vibratory plates



Rollers



Demolition technology



Generators



Lighting



Pumps



Excavators



Wheel loaders



Telehandlers



Dumpers



Financial solutions



Repair & Maintenance



Academy



EquipCare & EquipCare Pro



Rental



Concrete specialists



eStore



Spare parts



Used machines



ConcreTec



wackerneuson.com



Facebook
wackerneuson



Instagram
@wackerneuson



YouTube
Wacker Neuson



LinkedIn
Wacker Neuson



TikTok
@wacker.neuson



WN. EMEA.10291.V08.EN-US

03/2025 EN